



Automatic IR-Cut Switching Wide Angle USB Camera Module



2MP OV2710

(SKU:B0205)

QUICK START GUIDE

SPECS

Camera	
Sensor	1/2.7" OV2710
Resolution	2MP 1920 x 1080
Data Format	MJPEG/YUY2
Frame rate	MJPEG 30fps@1920 x 1080; YUY2 30fps@640 x 480
Lens	
Field of View (FOV)	H= 100°, D=138°
Lens Mount	M12
Focusing Range	3.3ft (1M) to infinity
IR Sensitivity	Integral IR filter, switch automatically based on light condition (only visible light during the daylight and IR sensitivity during the night)
Functionality and Compatibility	
Adjustable Features	Brightness, Contrast, Saturation, Hue, Sharpness, Gamma, Gain, White balance, Exposure.
System Compatibility	Win7/8/10, Linux, Mac and Android with UVC
Power	
Power Supply	DC 5V
Working Current	MAX 500mA
Physical	
Operating Temp.	-4°F~-158°F (-20°C~+70°C)
Dimension	38mmx38mm
Cable Length	3.3ft (1M)

INTRODUCTION

• About Arducam

Arducam has been a professional designer and manufacturer of SPI, MIPI, DVP and USB cameras since 2012. We also offer customized turnkey design and manufacturing solution services for customers who want their products to be unique.

• About this USB Camera

The B0205 is a new member of the Arducam's USB camera family. Based on 1/2.7" OV2710, it's a 2MP, UVC compliant, wide angle USB 2.0 camera with motorized IR-Cut filter and infrared LEDs. The motorized (switchable) IR-CUT filter and infrared LEDs can be triggered by the photoresistor according to the light environment to be ON/OFF to block or pass the infrared light. It can be widely used in wildlife photography, home security system, baby camera, etc.

• About UVC

The B0205 is a UVC-compliant camera. The native UVC drivers of Windows, Linux and Mac shall be compatible with this camera so that it does not require extra drivers to be installed.

• About Customer Service

If you need our help or want to customize other models of USB cameras, feel free to contact us at support@arducam.com

QUICK START

• How to download the program

Download the APP Amcap from the following link <https://www.arducam.com/downloads/app/AMCap.exe>

NOTE:

1. If used with the Android device, USB Camera APP and connect adapter are needed.
2. For Mac OS, please open the native software facetime and select the video camera "USB Camera" .

• How to connect the camera

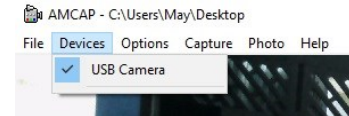
Connect the one end of the USB 2.0 cable to the USB 2.0 connector provided on the back of B0205, and connect the other end to the USB 2.0 host controller on the computer.

How to use the program (Windows demo only)

The Menu bar at the top of the shown image contains few menu items and the current preview resolution and the frame rate are displayed on the bottom bar when the application is running. The following sections describe each of the menu items

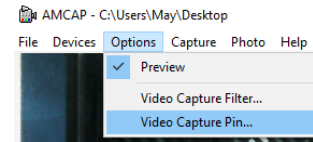
• Menu>Devices

This menu will show the available video devices to host PC. The B0205 named "USB Camera".



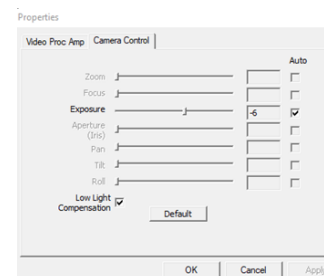
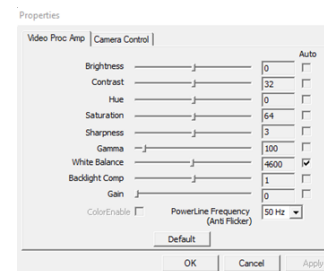
• Menu>Options

The options menu can be used to select the preview and image parameters supported by this camera.



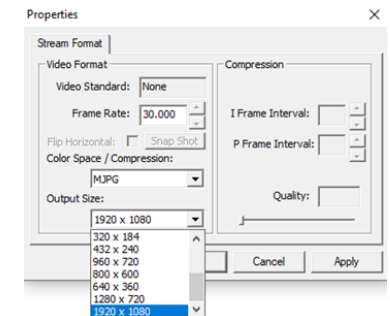
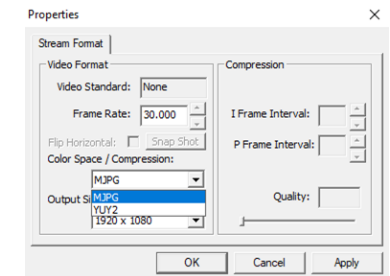
How to use the program (Windows demo only)

- Video Capture Filter -> Video Proc Amp/Camera Control



How to use the program (Windows demo only)

- Video Capture Pin



How to use the program (Windows demo only)

• Menu > Capture

The capture menu is used to capture the still image and video by using this application. You can also select the related parameters.

